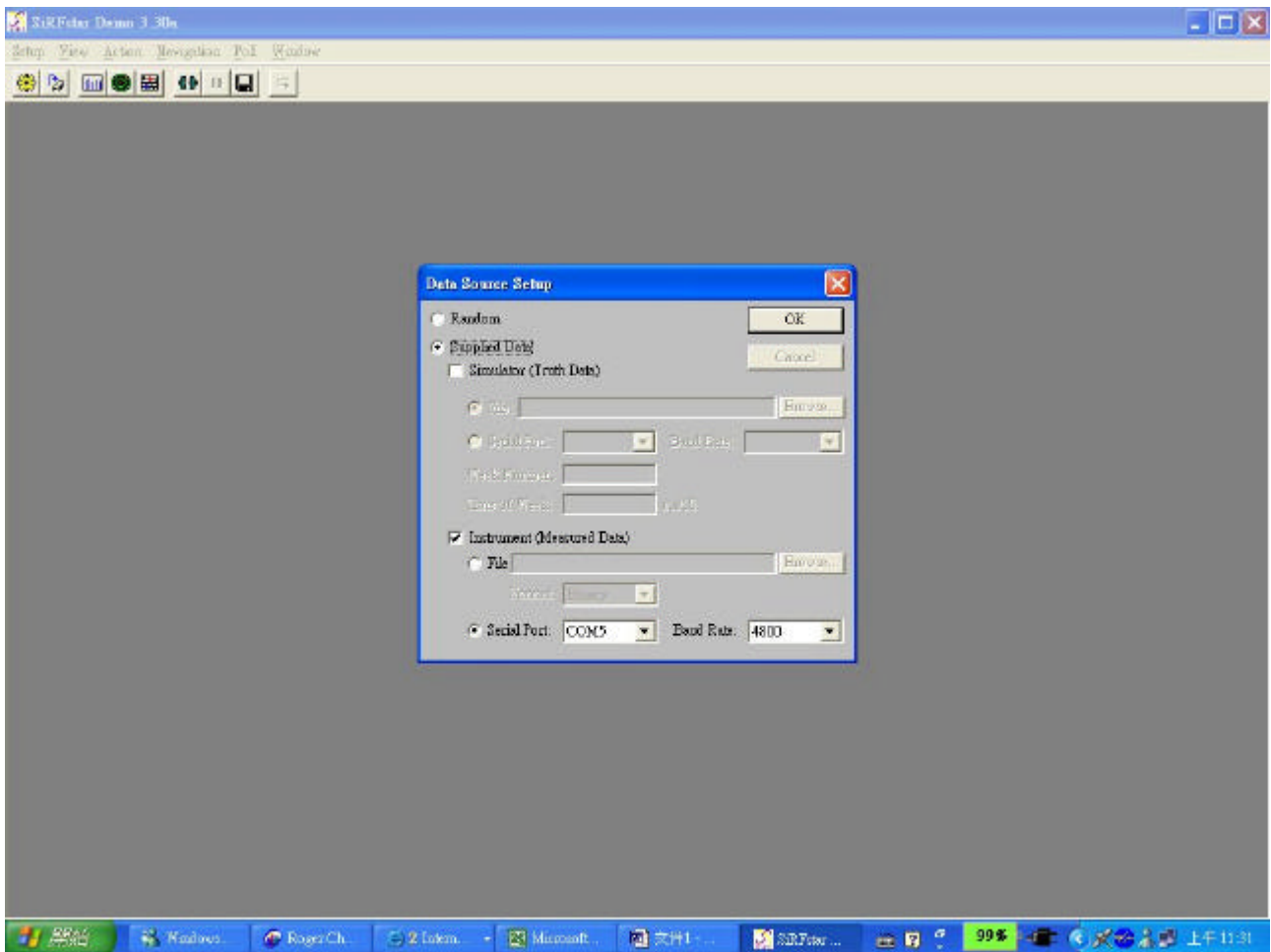
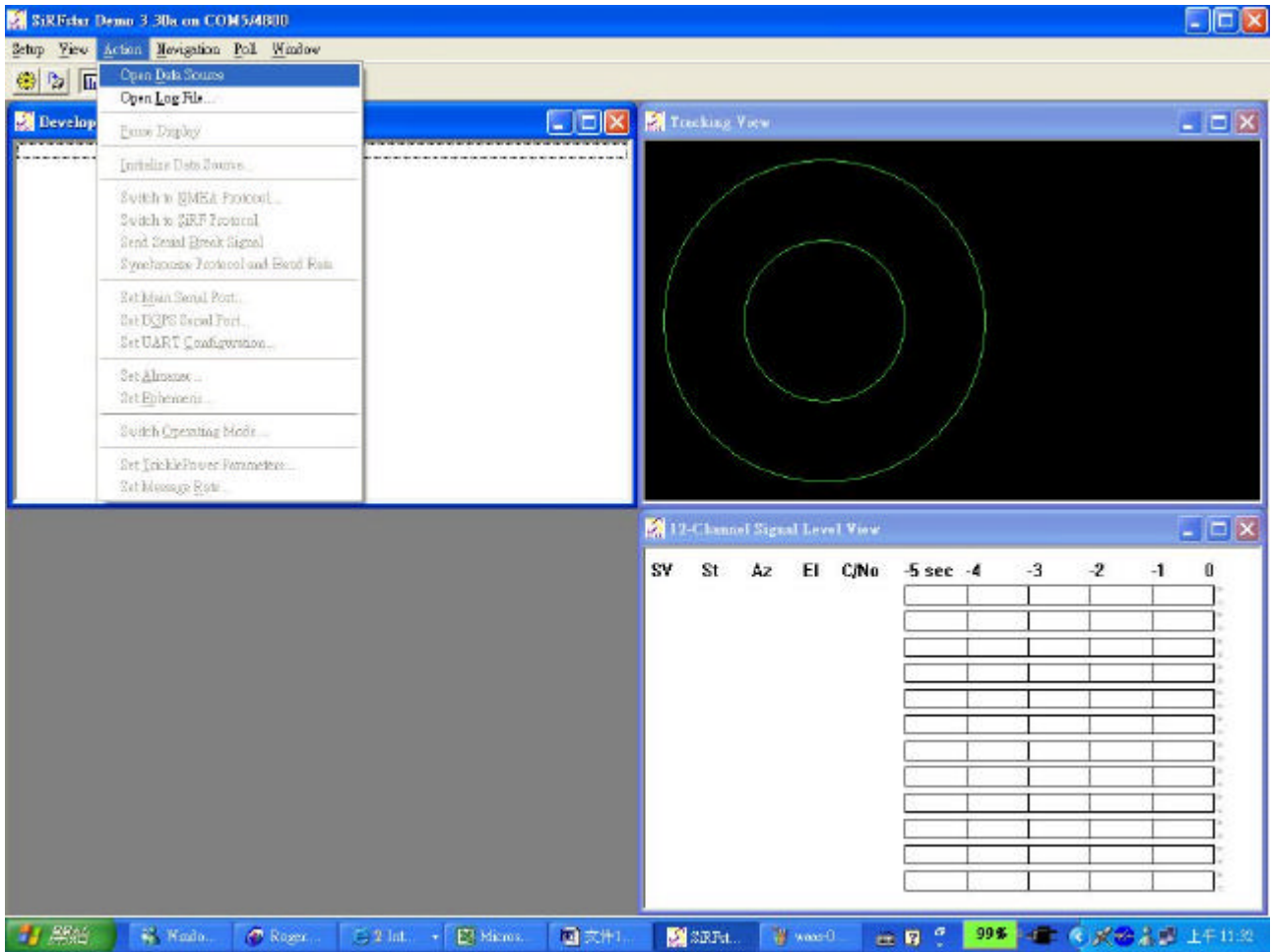


How to upload firmware for REB/RGM 3000, RGM-2000

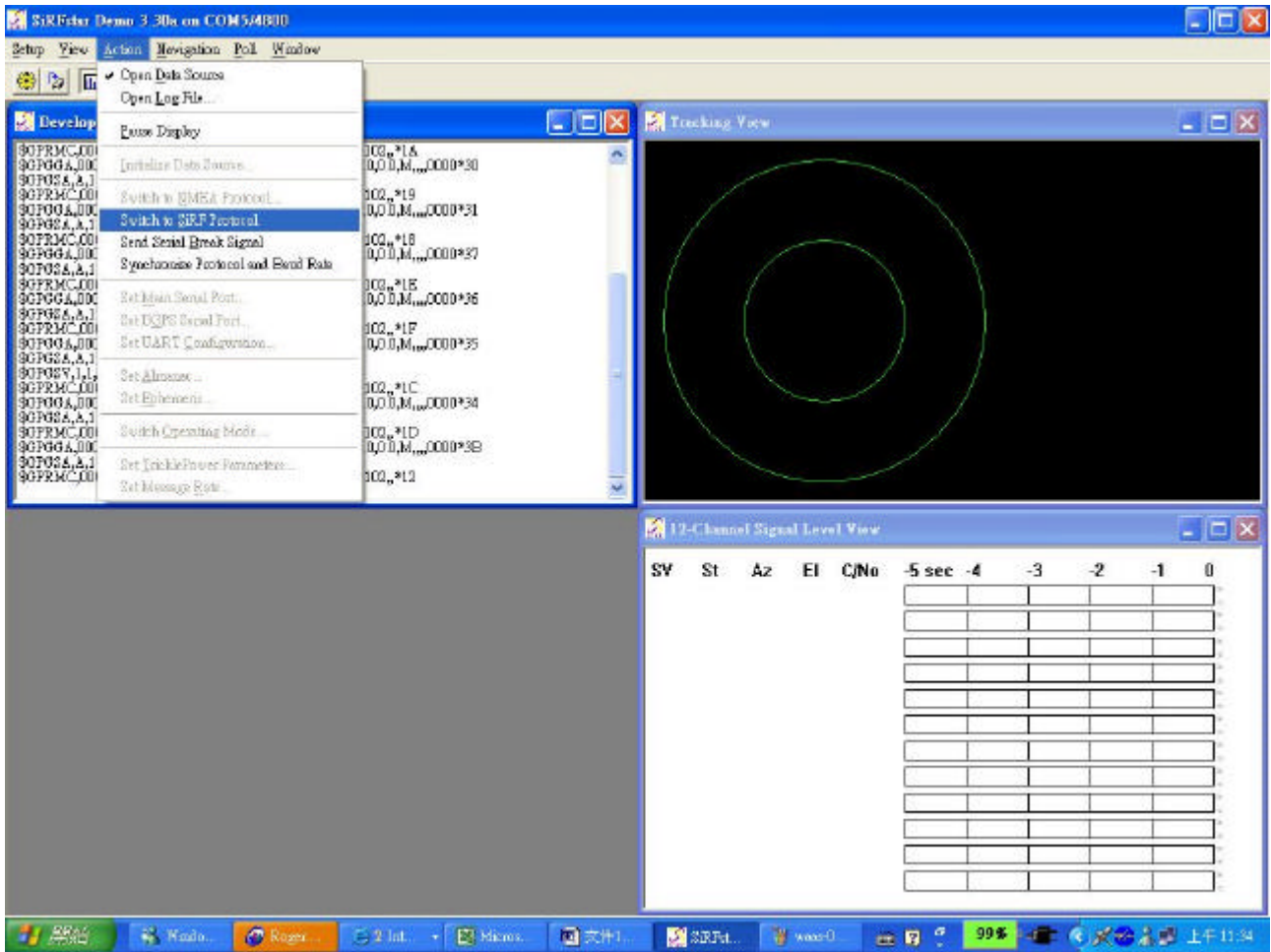
1) Run SIRFDEMO.exe , select the comport and baud rate at 4800 bps.



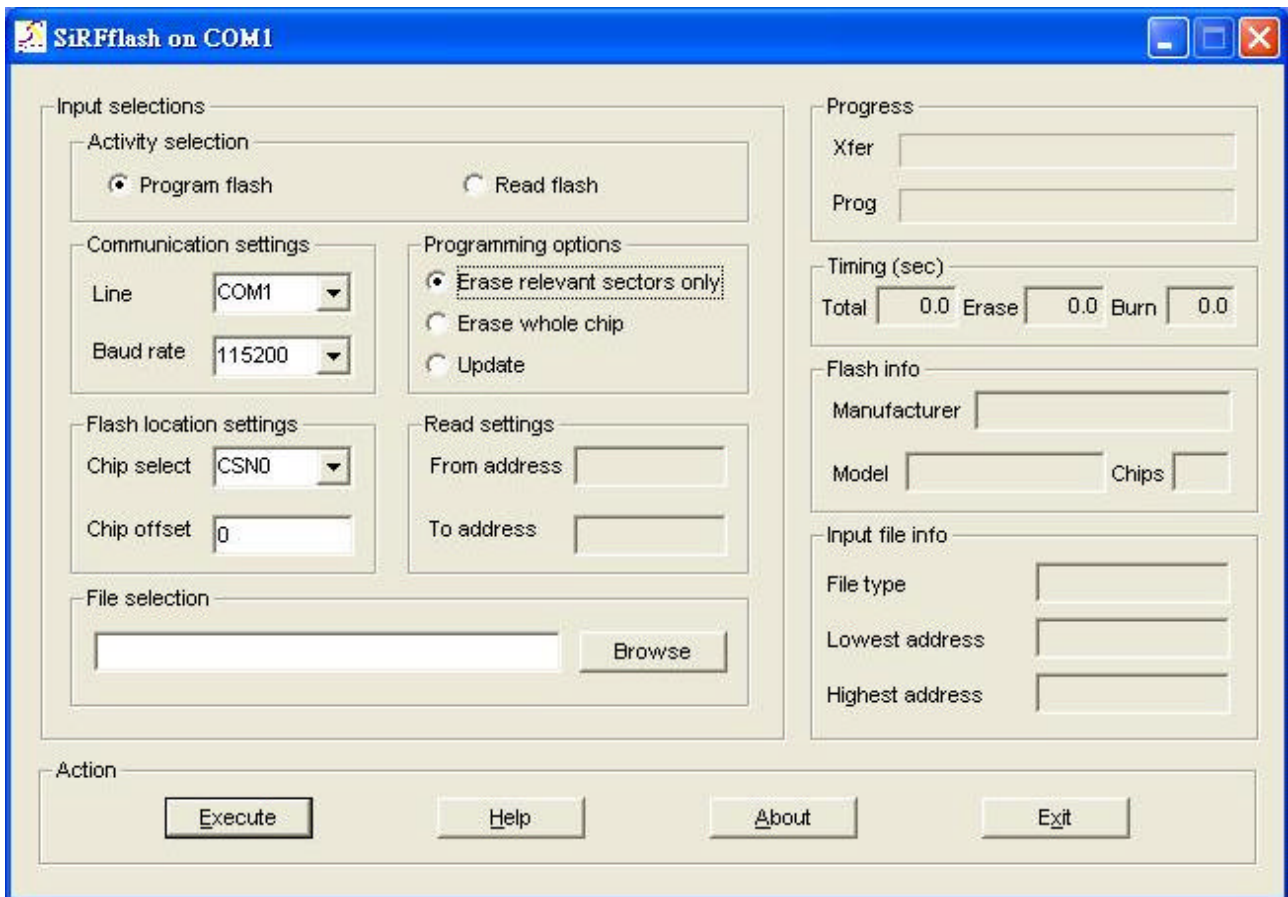
2) Open data source



3) Switch to SIRF protocol 38400bps and Quit SIRFDEMO



- 4)Unzip SIRFFLASH2.
- 5)Run SIRFFLASH.exe
- 6)Select COM port and filename. (leave other setting unchanged)



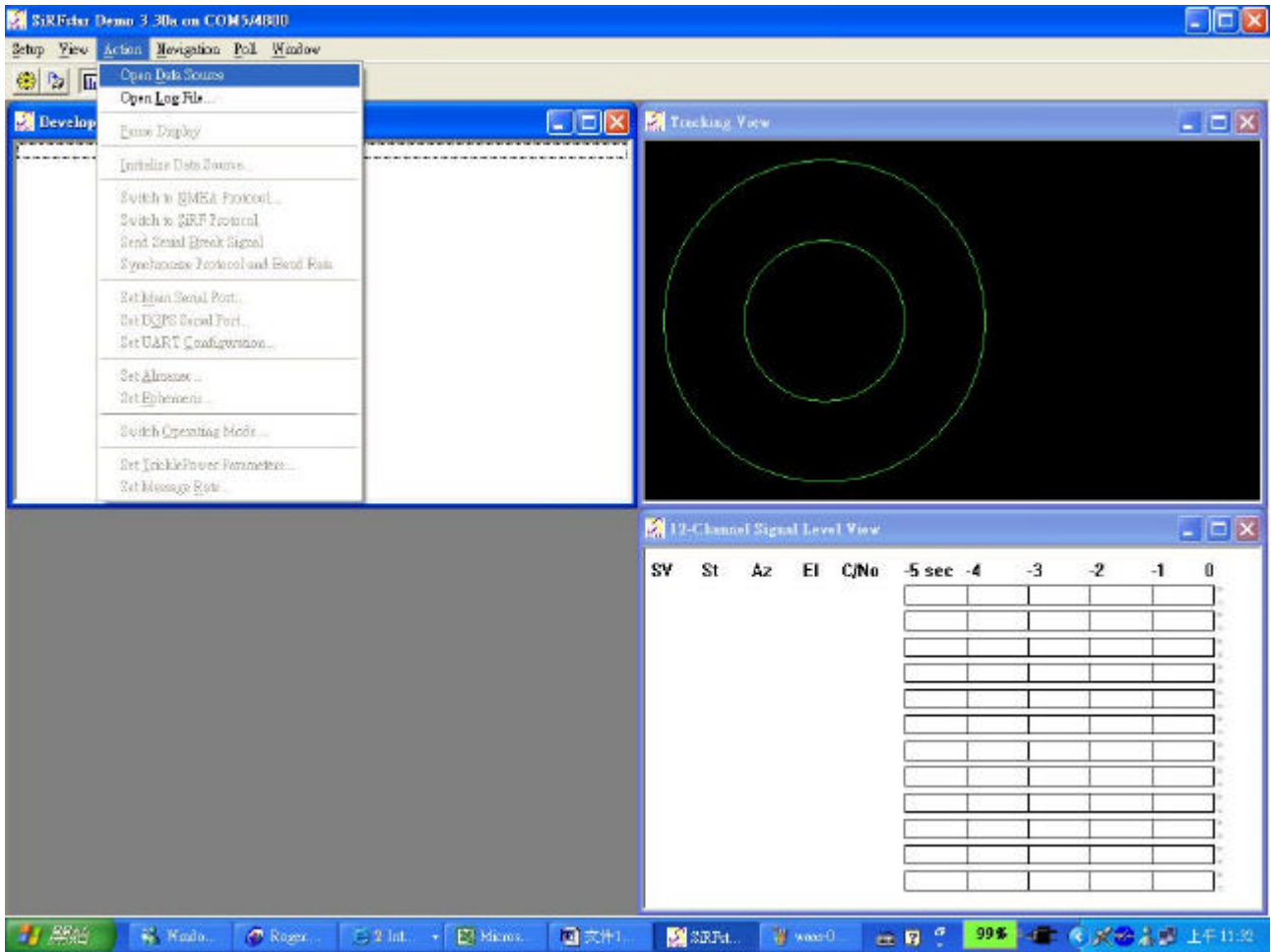
7)Click "Execute" icon

8)After finishing upload, please recycle the power .

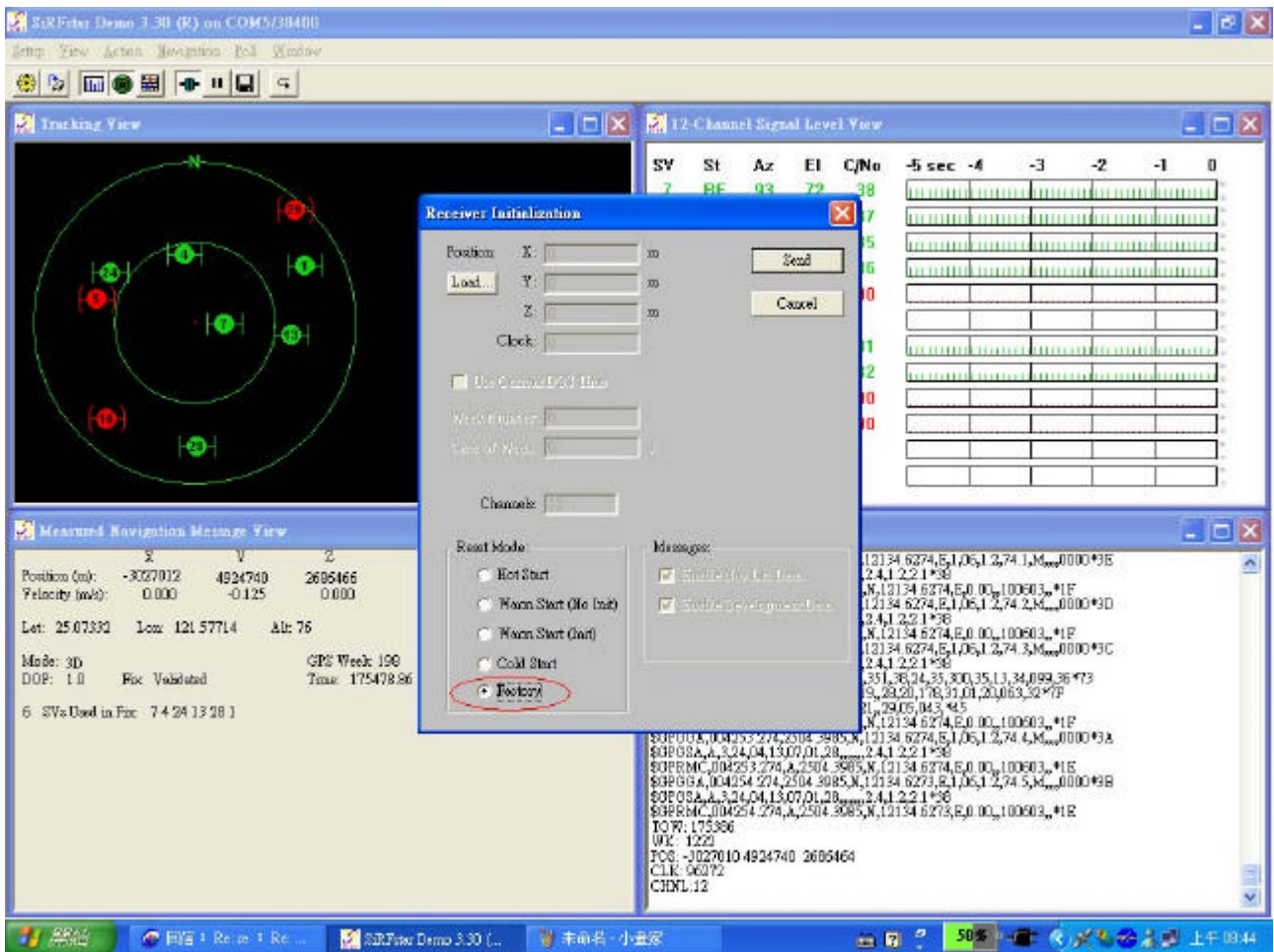
9)Run SIRFDEMO.exe again.

10)Select COM port and baud rate(38400bps).

11) Open data source



12)Go to Action>Initialize data source to perform Factory reset.



13) To check the protocol which is NMEA output at GGA,GSA,GSV,RMS,4800 bps, please repeat step 1 and step 2.